

# Hyphenated Prefix Words

Practise your weekly spelling words using cursive handwriting.

co-operate

co-ordinate

co-own

co-author

re-enter

re-educate

re-examine

re-evaluate

re-energise

re-elect

# Hyphenated Prefix Words

Practise your weekly spelling words using cursive handwriting.

co-operate

co-ordinate

co-own

co-author

re-enter

re-educate

re-examine

re-evaluate

re-energise

re-elect

# Hyphenated Prefix Words

Practise your weekly spelling words using print handwriting.

co-operate

co-ordinate

co-own

co-author

re-enter

re-educate

re-examine

re-evaluate

re-energise

re-elect

Stick Overlay Sheet Here

Stick Overlay Sheet Here

Stick Overlay Sheet Here

**co-operate**

**co-ordinate**

**co-own**

**co-author**

**re-enter**

**re-educate**

**re-examine**

**re-evaluate**

**re-energise**

**re-elect**

---

---

---

---

---

---

---

---

---

---

---

---

---

---

---

---

---

---

---

---

**Look**

**Write**

**Check**

**Week 5**

**Hyphenated Prefix Words**

co-operate re-educate  
co-ordinate re-examine  
co-own re-evaluate  
co-author re-energise  
re-enter re-elect

**Week 5**

**Hyphenated Prefix Words**

co-operate re-educate  
co-ordinate re-examine  
co-own re-evaluate  
co-author re-energise  
re-enter re-elect

**Week 5**

**Hyphenated Prefix Words**

co-operate re-educate  
co-ordinate re-examine  
co-own re-evaluate  
co-author re-energise  
re-enter re-elect

**Week 5**

**Hyphenated Prefix Words**

co-operate re-educate  
co-ordinate re-examine  
co-own re-evaluate  
co-author re-energise  
re-enter re-elect

**Week 5**

**Hyphenated Prefix Words**

co-operate re-educate  
co-ordinate re-examine  
co-own re-evaluate  
co-author re-energise  
re-enter re-elect

**Week 5**

**Hyphenated Prefix Words**

co-operate re-educate  
co-ordinate re-examine  
co-own re-evaluate  
co-author re-energise  
re-enter re-elect

**Week 5**

**Hyphenated Prefix Words**

co-operate re-educate  
co-ordinate re-examine  
co-own re-evaluate  
co-author re-energise  
re-enter re-elect

**Week 5**

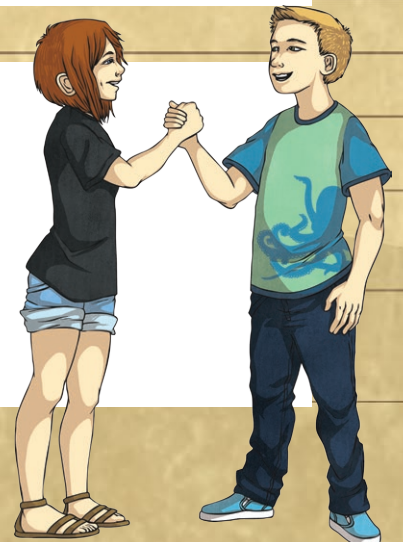
**Hyphenated Prefix Words**

co-operate re-educate  
co-ordinate re-examine  
co-own re-evaluate  
co-author re-energise  
re-enter re-elect

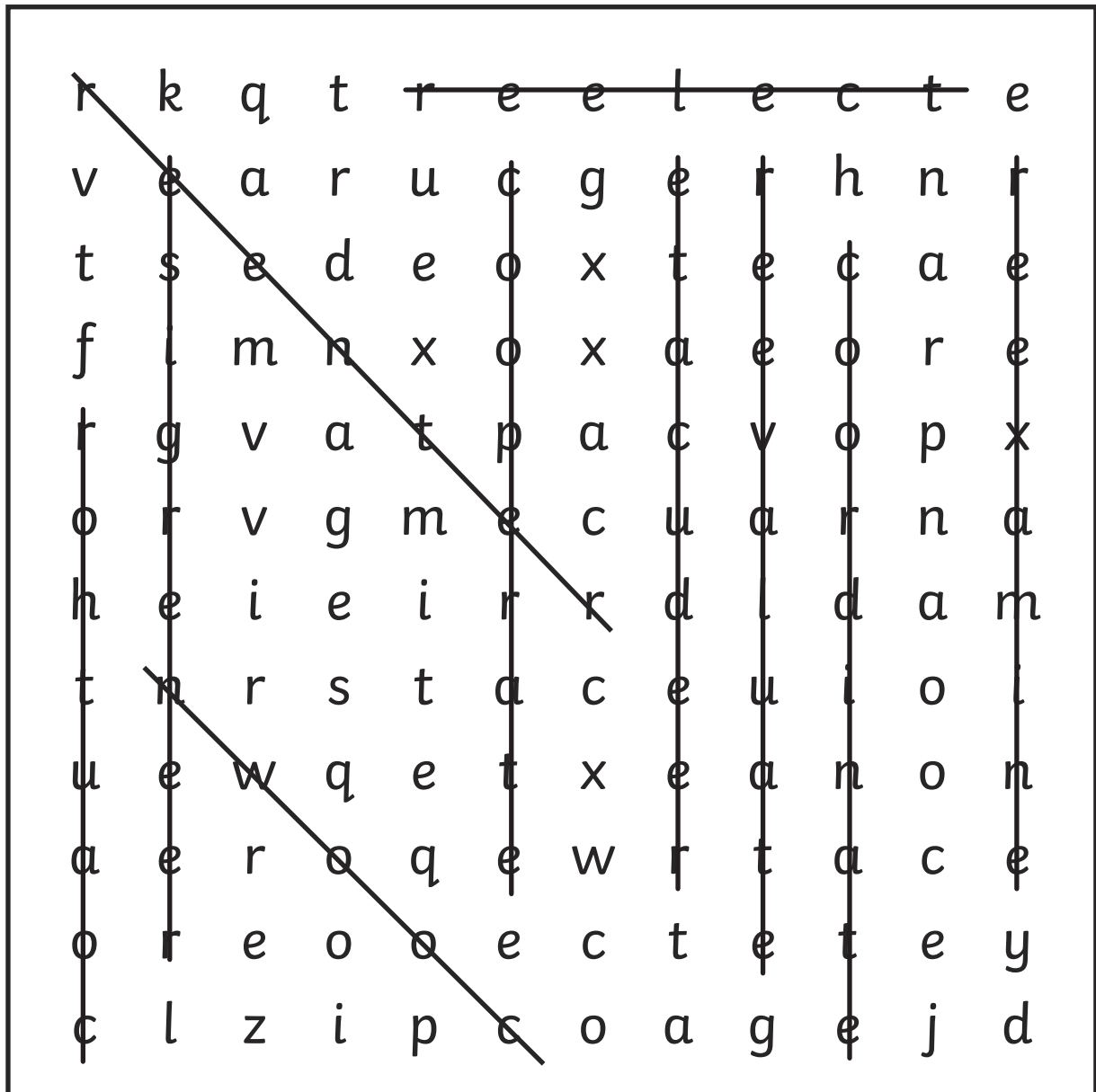
# Hyphenated Prefix Words

r k q t r e e l e c t e  
v e a r u c g e r h n r  
t s e d e o x t e c a e  
f i m n x o x a e o r e  
r g v a t p a c v o p x  
o r v g m e c u a r n a  
h e i e i r r d l d a m  
t n r s t a c e u i o i  
u e w q e t x e a n o n  
a e r o q e w r t a c e  
o r e o o e c t e t e y  
c l z i p c o a g e j d

co-operate	re-enter	re-energise
co-ordinate	re-educate	re-elect
co-own	re-examine	
co-author	re-evaluate	



# Hyphenated Prefix Words **Answers**



co-operate

re-enter

re-energise

co-ordinate

re-educate

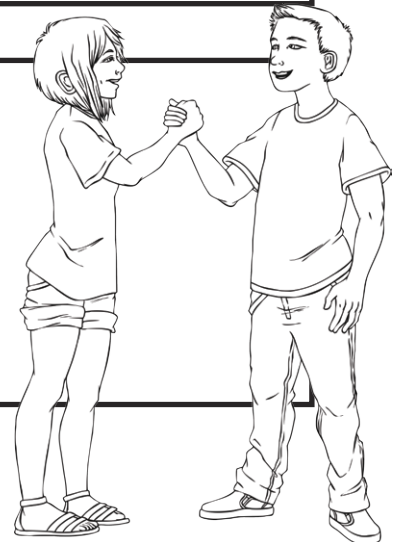
re-elect

co-own

re-examine

co-author

re-evaluate



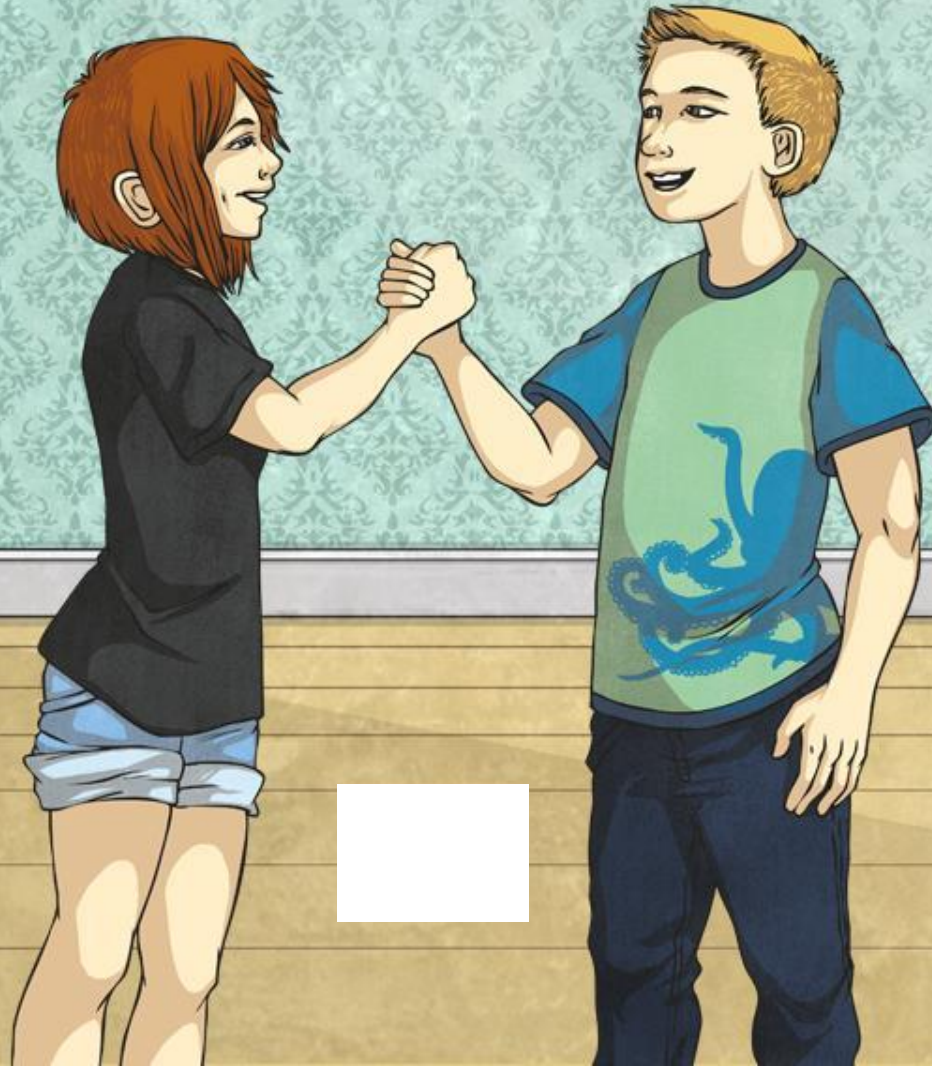


# Year 6 Term 1A Overview

Objectives that are in pink are a Y5/Y6 statutory requirement and individual words highlighted pink are from the Y5/Y6 statutory spelling list. The additional sets either: revise previously visited spelling rules from lower year groups; practise a spelling rule linked to a Y5/Y6 statutory spelling word or relate to a word, sentence or punctuation objective from the English Appendix 2 of the NC 2014.

Week 1	Week 2	Week 3	Week 4	Week 5	Week 6
<b>Ambitious Synonyms: Adjectives</b>	<b>Homophones &amp; Near Homophones: Nouns that end in -ce/-cy and verbs that end in -se/-sy</b>	<b>Adjectives ending in -ant into nouns ending in -ance/-ancy</b>	<b>Adjectives ending in -ent into nouns ending in -ence/-ency</b>	<b>Hyphens: To join a prefix ending in a vowel to a root word beginning with a vowel.</b>	<b>Hyphens: To join compound adjectives to avoid ambiguity</b>
aggressive	advice	observant	innocent	co-operate	man-eating
hostile	advise	observance	innocence	co-ordinate	little-used
awkward	device	expectant	decent	co-own	rock-bottom
obstinate	devise	expectancy	decency	co-author	wide-eyed
desperate	licence	hesitant	excellent	re-enter	pig-headed
frantic	license	hesitancy	excellence	re-educate	tight-fisted
disastrous	practice	tolerant	confident	re-examine	cold-hearted
calamitous	practise	tolerance	confidence	re-evaluate	stone-faced
marvellous	prophecy	relevant	existent	re-energise	green-eyed
spectacular	prophesy	relevance	existence	re-elect	short-tempered

# Hyphenated Prefix Words



Some words with prefixes need to have a hyphen added to separate the prefix and the root word. For example...

co-ordinate

re-educate

co-author

Working with a partner, can you discuss why these words might need hyphens?

Do the examples have anything in common?



All of these words have a prefix that ends in a vowel and a root word that begins in a vowel.

co-ordinate

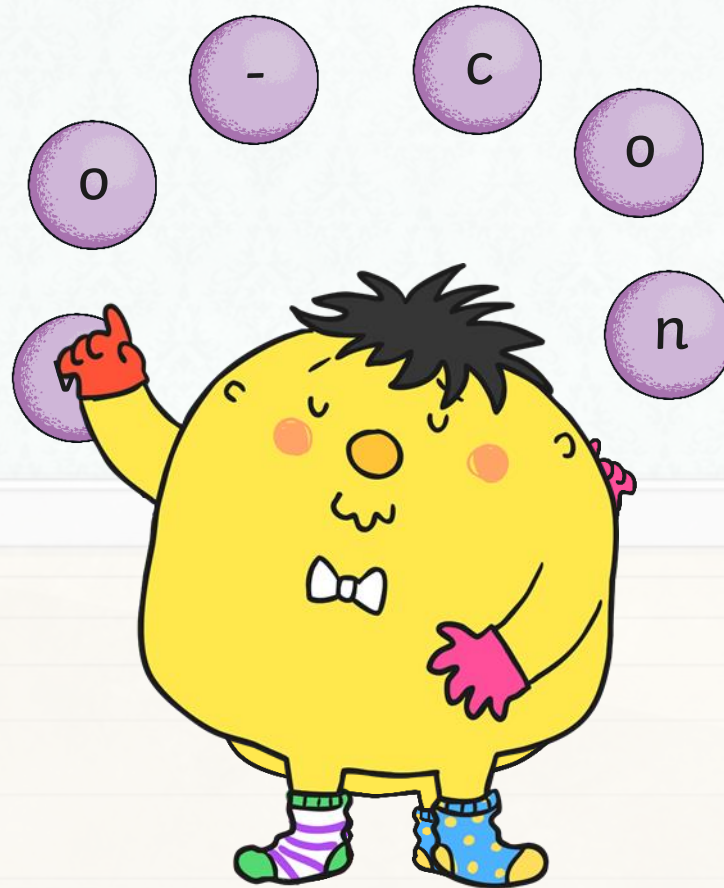
re-educate

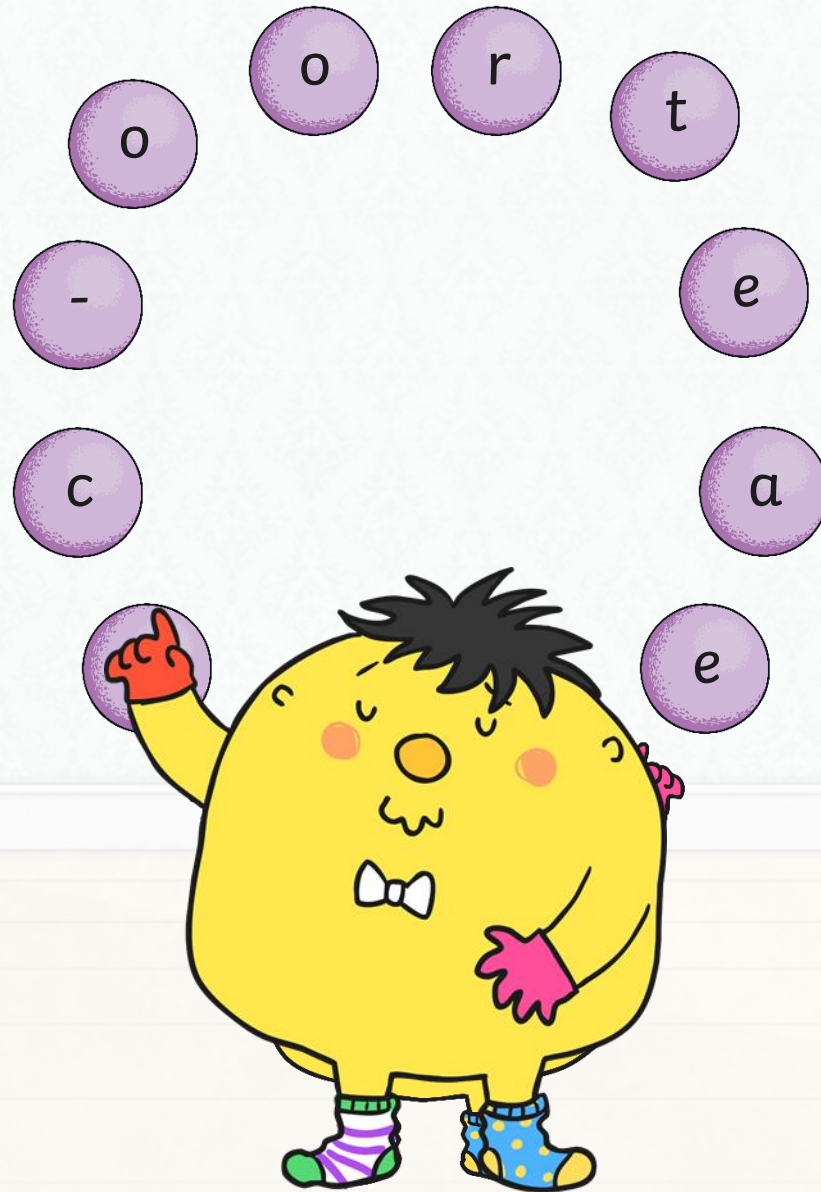
co-author



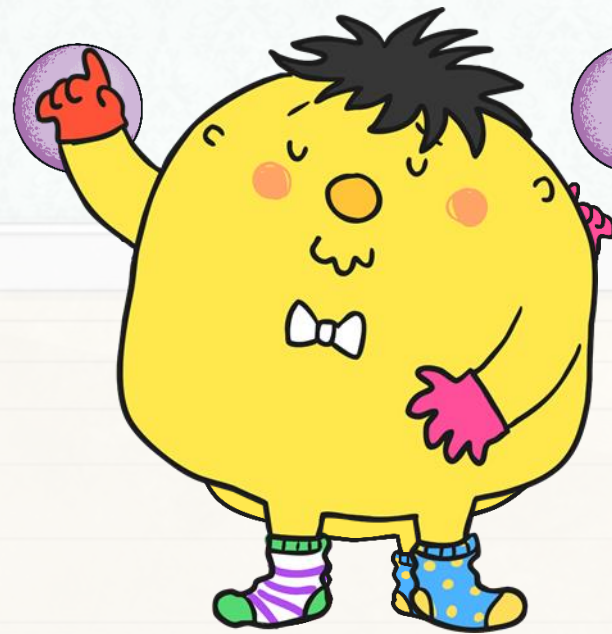
This usually means that the prefix and root word are separated by a hyphen.

Mr Whoops has been juggling with some of your spelling words.  
Can you help him to work out what they might be?  
Remember they are all hyphenated prefix words.





e r e i  
- n  
m x  
a



**Here are this week's spellings to practise.**



co-operate

co-ordinate

co-own

co-author

re-enter

re-educate

re-examine

re-evaluate

re-energise

re-elect

m

less



